



LANDSLIDE ADVISORY



ANTICIPATED LOSSES

Very High Risk Zones

Towns at Risk	Infrastructure at Risk	Roads at Risk (Km)	Population
18	12,319	1014.95 Km	7.1 Mn

High Risk Zones

Towns at Risk	Infrastructure at Risk	Roads at Risk (Km)	Population
19	16,323	1431.99 Km	7.3 Mn

Medium Risk Zones

Towns at Risk	Infrastructure at Risk	Roads at Risk (Km)	Population
15	11,043	1424.71 Km	6.1 Mn

Low Risk Zones

Towns at Risk	Infrastructure at Risk	Roads at Risk (Km)	Population
23	15,555	1955.12 Km	8.6 Mn

LIKELY IMPACT AREAS

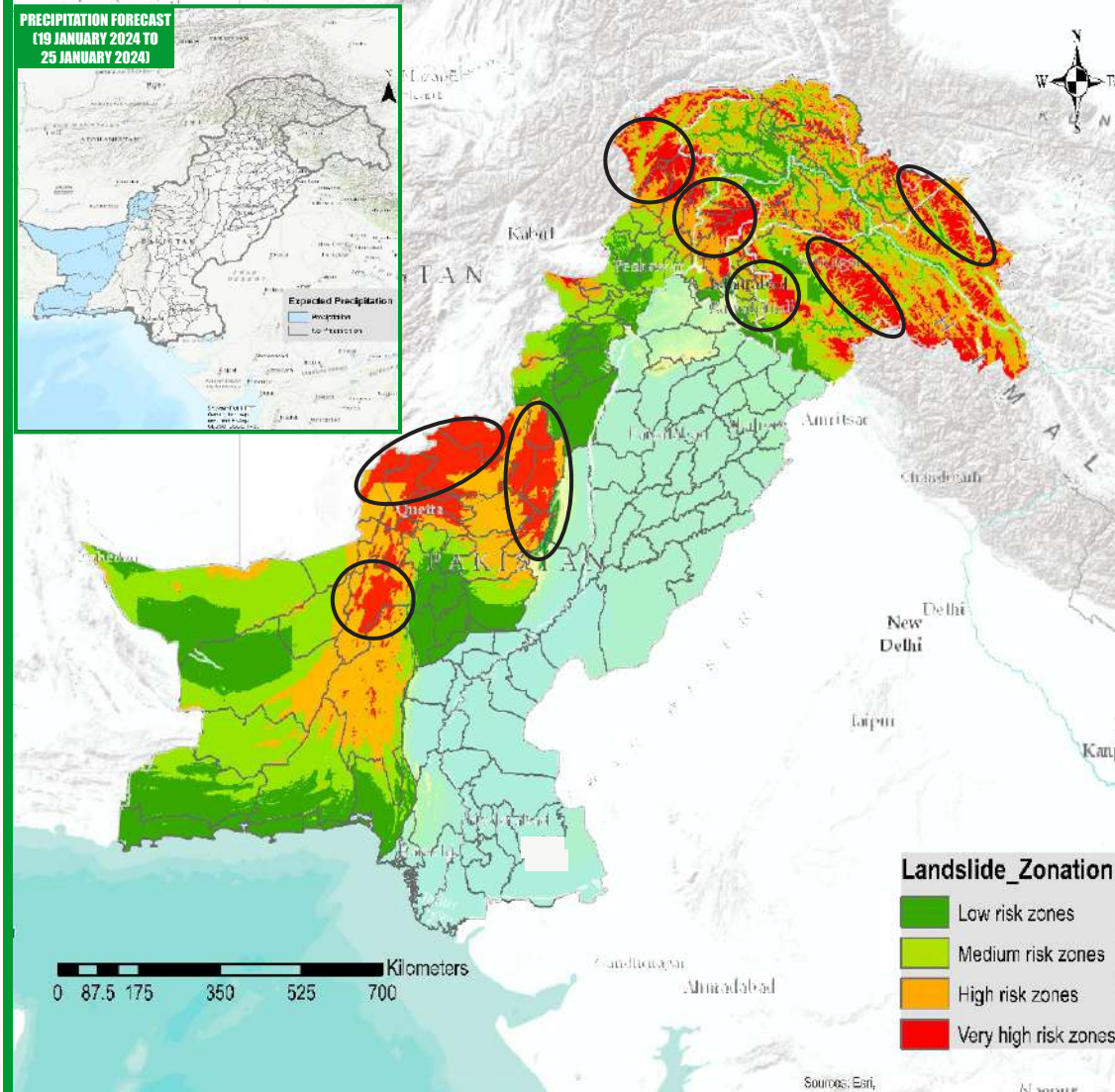
Khyber Pakhtunkhwa

Chitral	Swat	Shangla
Battagram	Mansehra	Khyber
Torghar	Kohistan	
	Gilgit Baltistan	
Hunza	Skardu	Ghanche
Astore		
	AJ & K	
Muzaffarabad	Haveli	Bhattian
	Balochistan	
Sherani	Zhob	Musakhel
Killah Saifullah	Pishin	Ziarat
Kalat	Quetta	Mastung

IMMEDIATE ACTION

- If you observe any of the above pre-landslide signs, it is crucial to move away from the affected areas immediately.
- PDMA, Rescue Services, Armed Forces and leading NGOs / CSOs to ensure availability of personnel / equipment in the indicated areas and be on stand-by for rapid response in case of any forecasted adverse weather systems

Landslide Vulnerable Zones



FORECASTED IMPACTS

- No adverse weather systems expected during this week (19 Jan, 2024 to 25 Jan, 2024).
- Light to moderate rainfall is expected within next 24 hours in some part of Baluchistan and Light snow also is expected in some part of Northern KP (Khyber Pakhtunkhwa). However, if the rainfall exceeds from 50-60 mm / day and the rain continue, be watchful of Landslides, Slope failures, Rock falls and Ground Subsidence in high vulnerable zones (encircled) in map.